

EXPRESS Buckhead II



Express Package \$16,941

Base price of the home in the selected community, plus Express Package price, plus any applicable lot premium on the selected homesite, equals total sales price.

EXPRESS HOMES are an alternative to traditional build-to-suit new homes. These selected floorplans are available on any Ball Homes homesite in Lexington* Ball Homes communities where the floorplan is already offered and determined to be an appropriate fit.

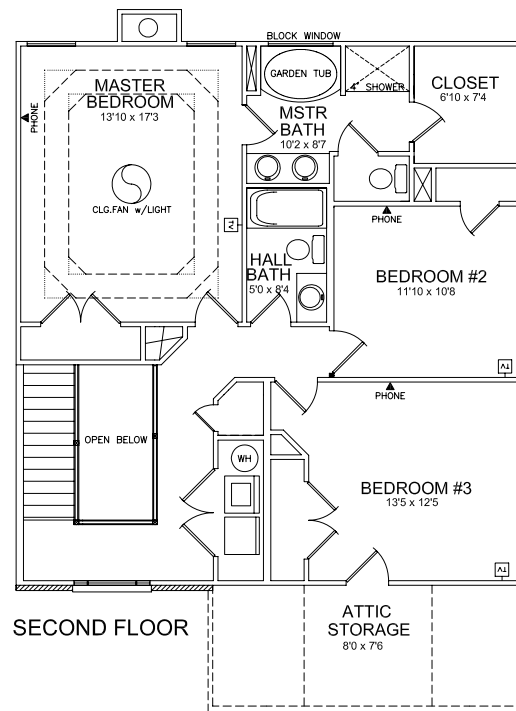
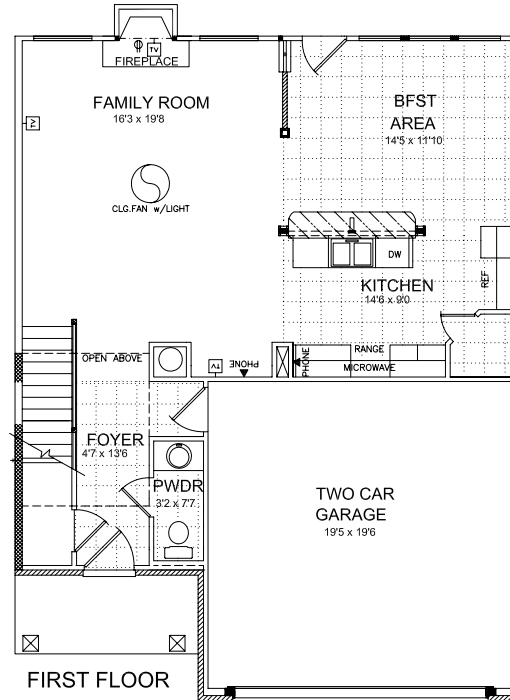
The Express package is a pre-selected combination of our most popular upgrades and product selections, ready to build and close in only 90 days**. **No selections or option changes are made by the homebuyer.** Ball Homes has construction plans ready and waiting for each Express Home floorplan, with the amenity and color selections made, from the first foundation block to the last ceramic tile.

When a contract is accepted on a Express Home, permit applications are expedited, and plans are rushed to the suppliers, tradespeople and job superintendent, so that construction can begin immediately, and the new home is completed in only 90 days.

*Not available in other locations due to extended start-up times.

**The 90-day build time offered assumes a slab foundation home. However, basement homes are also offered on suitable lots, with an extra 30 days of build time required. All contracts for Express Homes are contingent on the builder's ability to install the foundation within two weeks of the contract acceptance, as subject to weather constraints.

See reverse for option and finish details.



Because we are constantly working to improve our homes, prices and floorplans are subject to change without notice.



Buckhead II SELECTED UPGRADES AND INTERIOR FINISHES

- Elevation A
- 9' ceilings on first floor
- Outside chase fireplace with Cross Cut Travertine tumbled marble hearth and surround, Cambridge mantel, and black doors
- Luxury master bath with 42.5x60 Kohler bowfront garden tub, 4x3 separate shower stall, and 4x4 acrylic block window.
- Partial attic storage package with door from bedroom #3
- Level I Carpet: 00103 Cabana (Blissfield) with 8lb, ½" Ultimate carpet pad.
- Ceramic tile entry, powder room, kitchen, and breakfast area: Level I OAM76-13.
- Vinyl flooring in master bath, hall bath, and utility room: Initiator 66180
- Bristol Nutmeg cabinets with kitchen option #7, variable height wall cabinets with brushed oil finish cabinet knobs.
- Kitchen countertop: Butterum Granite 7732-46 with full wall travertine backsplash, P024, 4X4
- Upgraded kitchen sink: 8" deep, stainless, Dayton DSE23322-4.
- ADI stainless steel appliances include dishwasher, microwave, smoothtop range, and side-by-side refrigerator
- Traditional Tan wall paint with Antique White trim in all living areas where included in neighborhood; otherwise Antique White.
- 5.25" baseboards throughout
- Smooth ceilings
- Ceiling fans with lights in master bedroom and family room
- Two additional cable outlets, two additional phone jacks, and a 110 outlet in family room over fireplace
- Garage door opener with two remotes



Buckhead II EXTERIOR COLOR SELECTIONS:

- Windows: Tan
- Brick: Autumn Haze. Alternate brick selection (if color already used on home next door): New Generation.
- Siding: Sierra
- Garage door: Sandstone
- Roof: Moire Black (3-tab or architectural per neighborhood included features)
- Shutters: None.
- Front Door: Black



Lexington 859.245.1179

www.movingtoky.com



Revised 11.28.07