

Jackson II *Expanded*

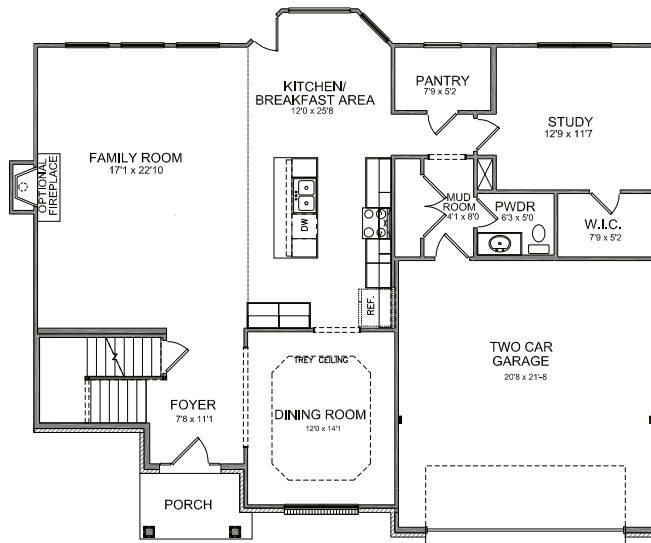


Elevation A



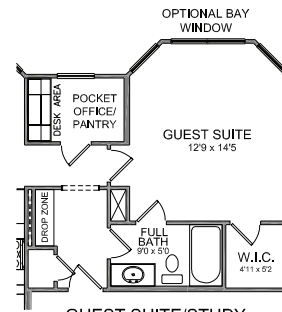
Elevation D

Jackson II *Expanded*



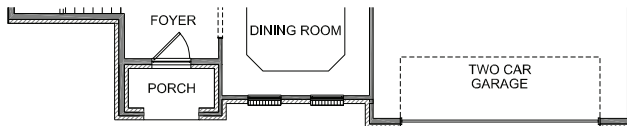
ELEV A

FIRST FLOOR PLAN

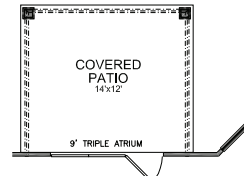


GUEST SUITE/STUDY SHOWN WITH OPTIONAL FULL BATH AND BAY

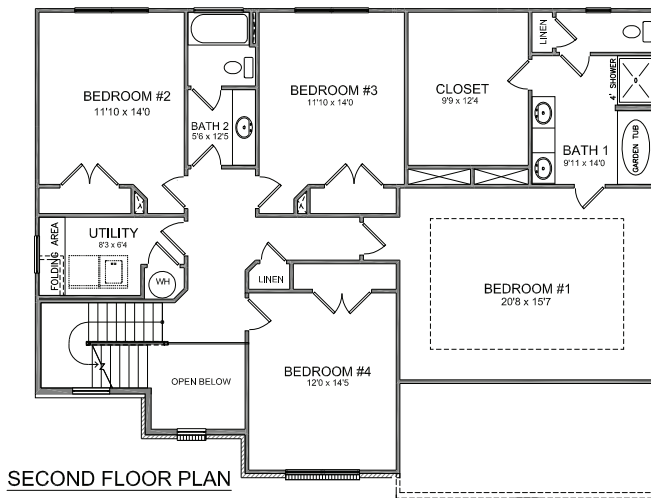
MUDROOM SHOWN WITH OPTIONAL DROP ZONE, AND PANTRY SHOWN WITH OPTIONAL POCKET OFFICE



ELEV D

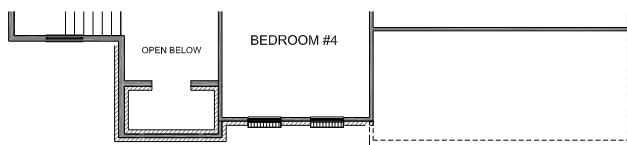


OPTIONAL 14'x12' COVERED PATIO

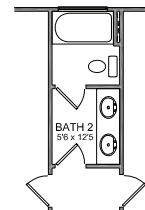


SECOND FLOOR PLAN

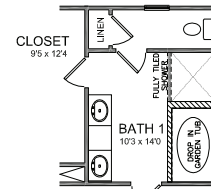
ELEV A



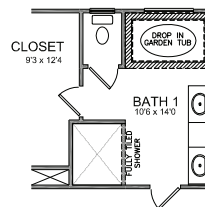
ELEV D



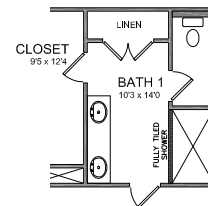
BATH 2 SHOWN w/OPTIONAL 6' DOUBLE BOWL VANITY



BATH 1 SHOWN WITH OPTIONAL DROP IN 42x72 GARDEN TUB AND 40' x 3'10 FULLY TILED SHOWER.



BATH 1 SHOWN WITH 42x72 DROP IN TUB AND OVERSIZED TILE DECK, 5'x4' FULLY TILED SHOWER & 8' DOUBLE BOWL VANITY



BATH 1 SHOWN WITH OPTIONAL 6'0" x 3'8" FULLY TILED SHOWER, LINEN AND 5010 TRANSOM.



CENTRAL KENTUCKY
Christie's International Real Estate
Bluegrass
Lexington Area
859.245.1179

LOUISVILLE AREA
Berkshire Hathaway Home Services
Parks and Weisberg Realtors
502.238.1890

KNOXVILLE AREA
Realty Executives Associates
865.693.3232

Basement and options will cause variances in floor plans. Contact your sales associate for more information. Because we are constantly working to improve our homes, floor plans are subject to change without notice.

Revised 4.11.23

